

# arc80



**ARC80** from OE Electrics offers the latest generation in wireless charging, providing a clutter free and convenient way to charge your phone. **ARC80** is specifically designed to work with both Samsung 10W and Apple 7.5W charging modes in addition to the standard 5W charge.

Simply rest your wireless compatible phone\* on the **ARC80** wireless charger for a FAST CONVENIENT CHARGE. With up to 10W of charging power **ARC80** is one of the fastest wireless chargers available. Perfect for either a fast full charge or a quick boost when you need it most.

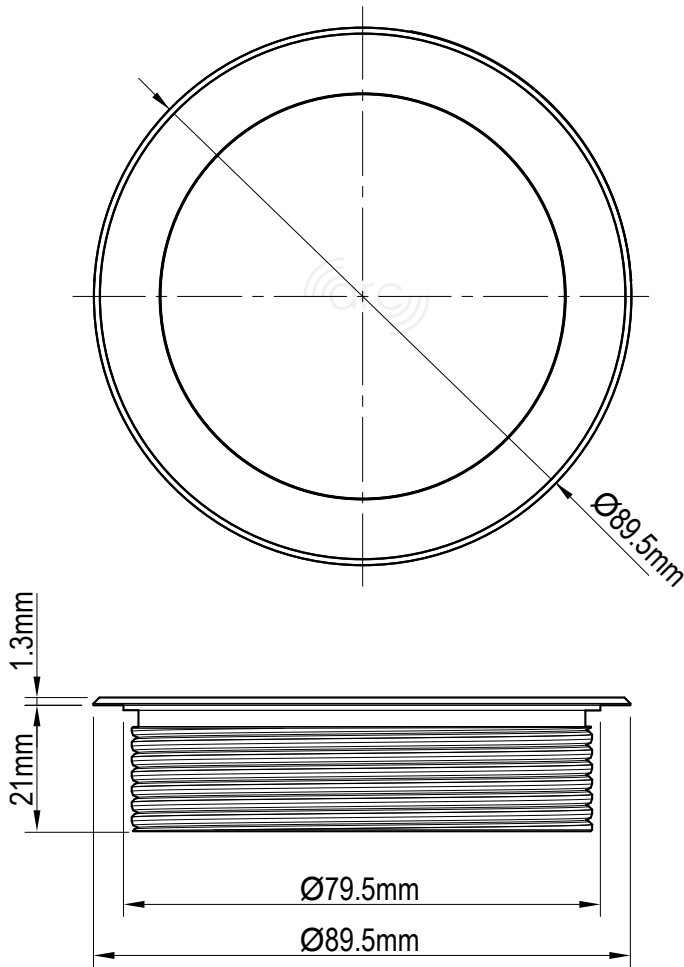
Simple to install, **ARC80** fits perfectly into an industry standard 80mm grommet hole in surfaces up to 35mm. The convenient and simple clamping nut makes securing the **ARC80** easy, and additional screws can be fitted as a theft deterrent. Available in white or black, **ARC80** uses the most advanced wireless charging technology to charge your phone without the need for cables.



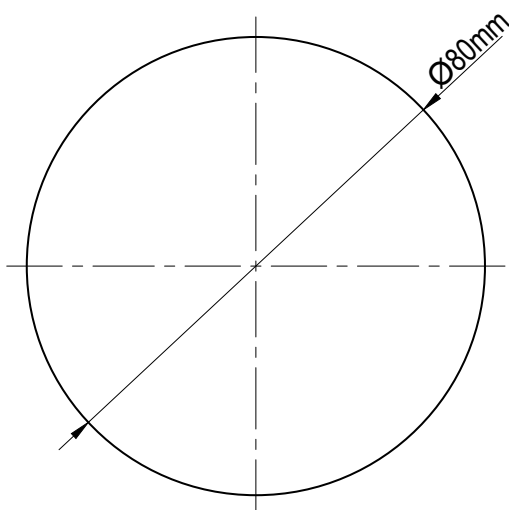
- 10 Watts of charging power
- Fast full charge or quick boost
- Unique simple clamp fitting
- Fully safety, EMC
- Qi Certified

\*For non wireless compatible phones and devices, take a look at our ADVANCED USB CHARGER: **TUF A+C 25W**

## ARC80 Dimensions



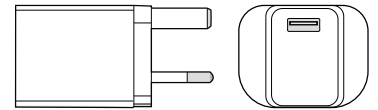
## ARC80 Cutout



## Specifications

Output power:	10 W (DC5V 1A / 9V 1.1A)
Input power:	15 W Max (DC5V 2A / 9V 1.67A)
Standby power:	0.45 W
Charging Z-Distance:	0-8 mm (coil to coil)
Surface Cutout size:	80 mm
Desk Thickness:	2-35 mm (Reversible fixing collar for 2-18 and 18-35 mm)
Certification:	CE
Housing Material:	Anodised Aluminium
Available colours:	Black centre with a black anodised aluminium rim. White centre with a silver anodised aluminium rim.
In the box:	ARC wireless charger, Micro USB cable, fixing tool

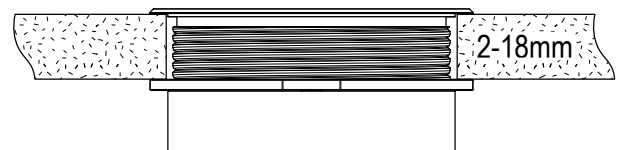
Power Adaptor sold separately



## Fitting

The reversible fixing collar can be used to accommodate desk thicknesses from 2-18mm in position A, and 18-35mm in position B.

### A) For thin surfaces



### B) For thick surfaces



Place ARC80 into an  $\text{Ø}80\text{mm}$  cut-out, and tighten the fixing collar by hand in the position best suited to the thickness of your surface.