

EasyClamp



Easy Clamp is a minimalist yet remarkably effective modular horizontal cable management system that is a perfect companion for the OE Electrics range of under desk power modules.

The key strength of Easy Clamp is the simplicity with which it achieves the management of power and data below the desk top and is perfect for mounting power modules under table top access ports.

Easy Clamp is a great solution for open backed desks and small meeting tables where a conventional suspended cable tray would be visually intrusive.

Easy Clamp can be combined with our Pathfinder umbilical for a complete floor to desk top cable management solution.

USPs

- Unique mounting rail concept
- Flexible modular system
- Simple to install & reconfigure
- Power module and cable clips
- Universal “Velcro” bracket



key features

Aluminium Mounting rail

The core component of Easy-Clamp is a solid aluminium mounting rail to which plastic mounting clips for power modules, laptop power supplies and cables can be attached. The aluminium mounting rail is available in 400mm modular sections or as a fixed 1000mm rail.

Mounting clips

Easy Clamp mounting clips for Power modules, power/data cables and IT accessories can be securely attached to the Easy Clamp rail by simply locating and clipping in place.

Configuration

Custom EasyClamp kits can be created from the range of modular components, or alternatively the 'EasyClamp 1000 kit' is available which contains the standard parts required for a typical under desk top installation.

Pathfinder/Cable Snake Integration

Easy clamp can be combined with our Pathfinder and Cable Snake vertical cable management products to achieve a complete floor box to desk top cable management solution.

The EasyClamp 1000 kit comprises:

- 1.0 metre mounting rail
- 3 x cable clips
- 2 x 90° Powerunit/Powerbar clips
- 4 x wood screws



Easy Clamp Modular rail system showing end caps and connectors with fixing screws



EasyClamp 400 rail with an OE POWER BAR 70 attached using 2 x 90° mounting clips



Optional "Velcro" tabs for power-block attachment

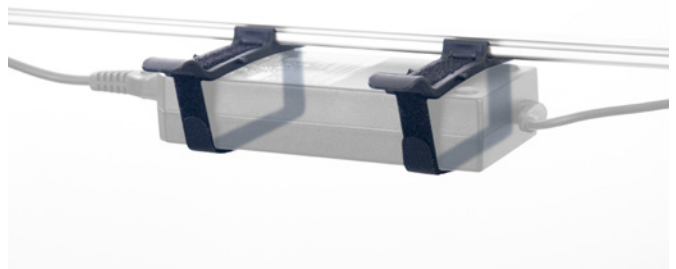


Fig. A



Fig. B

Our Pathfinder umbilical can be integrated with the EasyClamp for floor to desktop cable routing - Using either the Pathfinder's standard fixing (fig. A) or by attaching the Pathfinder directly to EasyClamp (fig. B)

technical

Materials:

Rail: Anodised aluminium
End caps: Grey Polycarbonate
Connectors: Grey Polycarbonate

Mounting:

No 4 x 20 wood screws supplied

Length options

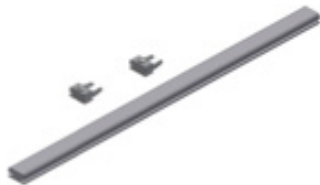
400mm (1 x 380mm rail + 2 x end caps)
790mm (2 x 380mm rails + 2 x end caps, 1 x Interconnect)
1000mm (1 x 1000mm rail)
1180mm (3 x 380mm rails + 2 x end caps, 2 x Interconnects)
1570mm (4 x 380mm rails + 2 x end caps, 3 x Interconnects)

Power module compatibility

Easy Clamp rails and power clips (60° & 90°) are compatible with the following OE products:

- Powerunit
- Powerbar
- Powerbar 2P20
- Powerbox/Data Box
- QikBox

Easy Clamp Modular Components



2601245 EasyClamp profile (400mm)



2601108 EasyClamp profile (1000mm)



2601160 EasyClamp Cable Clip/B



2601269 EasyClamp Connector (for joining 400mm profiles together)



2601153 EasyClamp 30x60 90° Powerunit/Powerbar clip



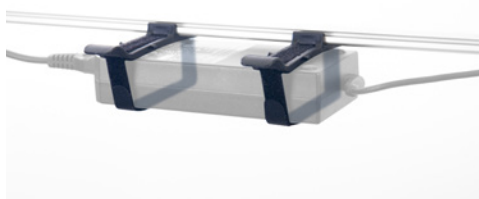
2601252 EasyClamp 30x60 60° Powerunit/Powerbar clip



2607407 EasyClamp 44x61 90° Powerbox clip



2607414 EasyClamp 44x61 60° Powerbox clip



2601177 QL EasyClamp Velcro Clip/B

EASY Clamp Clips

Types: Power, Cable, Universal Velcro

Materials: Black Nylon

Mounting: Clip onto rails (no tool needed)

Power clip Options

90° (vertical) and 60° (angled).

Cable clip capacity

4 typical power/data/AV cables

Universal Velcro clip

Suitable for mounting:

- non OE power modules
- IT power supplies